



राष्ट्रीय प्रौद्योगिकी संस्थान, राउरकेला
NATIONAL INSTITUTE OF TECHNOLOGY ROURKELA

BIJU PATNAIK CENTRAL LIBRARY USER EDUCATION PROGRAMME



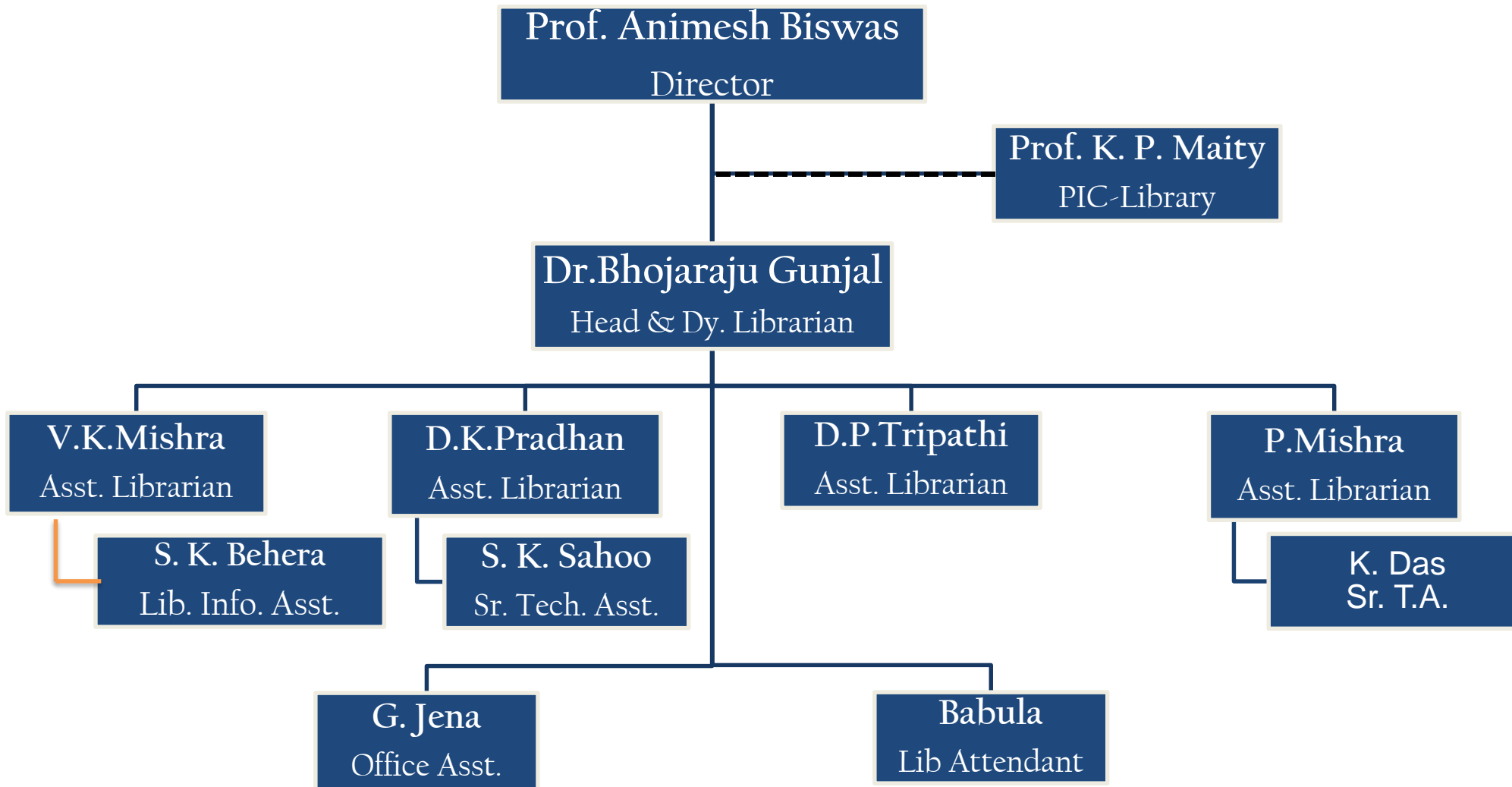
Introduction about BPCL

- The Central Library of National Institute of Technology, Rourkela has named after Biju Patnaik - the former Chief Minister of Odisha, the legendary industrialist and statesman and the founding Chairman of Board of Governors of REC Rourkela. It has been started functional since 1965.
- Has four storeys covering an area of 2400 sq. mts.
- Equipped with latest tools and technologies to provide IT based services to NITR academic community.
- Website: <http://library.nitrkl.ac.in>

General Information

Year of Establishment	1965
Total area of the library (in Sq. Mts.)	2400 sq. mts
Total seating capacity	350
Working hours	<p>On all working day (Monday – Friday) : 9:00 am – 10:00 pm</p> <p>Saturday, Sunday & Holiday : 9:00 am – 6:00 pm</p> <p>General Reading Room : Remains open till 10 pm including Saturday, Sunday & Holiday) (Only General Reading Room)</p>

Organizational Structure of Central Library



— Administration and Management (Organizational and Functional relationship)
----- Policy and Decision Making (Functional relationship)

Best Practices adopted by BPCL

- Self Check-in/Check Out using RFID
- Campus wide (Residences, Hostels, etc.) access to E-resources
- OPAC search facility for Print and E-books of different publishers with links to full texts
- Liaison Program with Departments (LPD) to conduct Orientation/User Education Programme at each departments
- Research/Project Support Services (RPS) to users
- Knowledge Sharing Session for all library staff (Weekly)
- Reference & Document Deliver Service
- Library Survey - Feedback on library services

Best Practices adopted by BPCL

- LibGuide – Customised Subject/Research Guide to connect all resources by Subject-wise at one place
- Library Website – a single point to connect users with all its content
- State-of-the-art implementations - Mobile Applications, QR Code, etc.
- Open Access to all institutional repositories
- Outreach Programs:
 - User Orientation Programs (Institute and Department-level)
 - User Awareness Workshops (UAW)
 - Author Workshops (Time to Time)
- Dissemination Management System

Floor Plan of BPCL

Floors	A – Wing	B – Wing
Ground Floor	Circulation Counter, Help Desk, Self-Check-in/Check-out, Periodical Section, HOD Cabin, Information KIOSK, OPAC, Publication Stack, New Arrival Display (Books & Periodicals), Reading Space, Office Cabin, Security Counter, Baggage Counter	General Reading Hall (Outside of BPCL) Toilets, Drinking Water,
First Floor	Reading Space, Acquisition / Technical Section – SIC, Circulation – SIC	Book Stack (1-19), OPAC
Second Floor	Book Stack (Reference Books), Reading Space, Audio-Visual, Digital Processing Lab (Scanner) Section, Ph.D. / M. Tech	Book Stack (20-36), Reading Space, OPAC
Third Floor	Bound Volume Stack, Old Damaged Stock, Binding Room	Bound Volume Stack, Research Scholar Zone, Reading Room, Journal Help-Desk, Binding Store Room

Library Collections

Resource Type	Collections
Books	84000+
Periodicals	
Indian Print Journals/ Magazines	90 Titles
Back volumes	17900+
E-resources	
e-Journals (25 – Full Text)	8300+ Titles
Database (3+ 3 ESS)	6
Conference Proceedings (2)	20000+
Standards	10000+
eBooks (2)	15000+
World eBook Library (NDL)	1
Video Lectures @ NPTEL	10000+
CD-ROM (Book Accompanying)	1000+
Thesis (Hard copy) M.Tech (R) Ph.D.	650+
Learning Management System (IEEE SWEBOOK)	1

Resource Type	Items
In-house archival / e-resources	
E-Papers (DSpace)	2852+
E-Thesis (e-Print)	6542+
Open Access Odia Books (OAOB)	779
NITR Documents	300+

As on July 2018

IT-based Library Services

- User Orientation Programme
- Online Public Access Catalogue
- Self Issue/Return using RFID
- Information KIOSK
- Online reserve/renew documents
- New Arrivals Alert of Books & Periodicals
- E-Newsletter (Quarterly)
- Alerts (Overdue, Fine, etc.)
- Institutional Repositories
 - Scholarly Publications (Articles)
 - ETDs (Theses & Dissertations)
 - Project - Open Access Odia Books (OAOB)
 - NITR Documents
- Liaison Program with Departments (LPD)
- Research / Project Support Service (RPS)
 - Turnitin, Grammarly, Scopus, WOS, Ref Mgt.,
- User Awareness Workshops
- Trial Access and Demos of Products
- Subject / Research Guide



Pedestal Security Gate



Information KIOSK

Lending Services

- Books are tagged with RFID
- Self check-in/check out
- Reference Books will be issued for faculty for 2 days on request
- Book accompanies CDs are issued to use within library

Privileges & Duration:

Users Category	General Books	
	No. of Books	Issue Period
Faculty / Officers	6	21 days
Ph. D.	6	21 days
U.G./P.G.	4	21 days
Non Teaching Staff	2	21 days

Fine details: <http://library.nitrkl.ac.in/index.php/services/loan-privileges-and-fine>

Renewal: <http://library.nitrkl.ac.in/index.php/services/reserve-renewal>

E-Resources @ BPCL – ESS and Self-Support

SN	ESS Supported Resources	SN	Self-Support Resources
1	Jgate Plus	1	ACS
2	Nature	2	Science Direct
3	American Institute of Physics	3	RSC
4	JSTOR	4.	SAGE Journals
5	APS	5	Taylor & Francis
6	ASCE	6	Wiley 22 Titles
7	ASME	7	PROWESS
8	ACM Digital Library	8	SCOPUS
9	Oxford University Press	9	Emerald Publishing
10	SIAM	10	LNCS E-Books
11	Project Muse	11	IEEE Journals
12	Springer Link 1400	12	ASTM Standards
13	Economic & Political Weekly		

SN	Databases
1	MathSciNet
2	Web of Knowledge
3	SciFinder
4	Web of Science
5	ISID Database
6	Scopus

बीजू पटनायक केन्द्रीय पुस्तकालय Biju Patnaik Central Library		List of Full Text e-Journals				
		ACM Digital Library				
	SN	Title	e-ISSN	Coverage	URL/URI/DOI	Subject
ACMOL	1	ACM Computing Surveys	1557-7341	1969-03	http://dl.acm.org/citation.cfm?id=1204	Computers
ACS	2	ACM Journal of Computer Documentation	1557-9441	2000-02	http://dl.acm.org/citation.cfm?id=124	Computers - Information Science And Information Theory
AIP	3	ACM Journal on Emerging Technologies in Computing Systems	1550-4840	2005-04	http://dl.acm.org/citation.cfm?id=1967	Computers - Machine Theory
APS	4	Journal of Data and Information Quality	1936-1963	2009-06	http://dl.acm.org/citation.cfm?id=11191	Computers - Data Base Management
ASCE	5	Journal of Experimental Algorithmics	1084-6654	1996	http://dl.acm.org/citation.cfm?id=1430	Computers - Computer Programming
ASME	6	Journal of the ACM	1557-735X	1954-01	http://dl.acm.org/citation.cfm?id=1401	Computers
ASTM	7	Journal on Computing and Cultural Heritage	1556-4711	2008-06	http://dl.acm.org/citation.cfm?id=11157	Computers, Ethnic Interests
Bentham Science	8	Journal on Educational Resources in Computing	1531-4278	2001-03	http://dl.acm.org/citation.cfm?id=1814	Computers, Education
De Gruyter	9	ACM Letters on Programming Languages and Systems	1557-7384	1992-03	http://dl.acm.org/citation.cfm?id=1513	Computers - Computer Programming
Emerald	10	ACM Transactions on Accessible Computing	1936-7236	2008-05	http://dl.acm.org/citation.cfm?id=11156	Computers
EPW	11	ACM Transactions on Algorithms	1549-6333	2005-07	http://dl.acm.org/citation.cfm?id=1982	Mathematics - Computer Applications
HBR	12	ACM Transactions on Applied Perception	1544-3965	2004-07	http://dl.acm.org/citation.cfm?id=1932	Computers
IEEE/IEL Online	13	ACM Transactions on Architecture and Code Optimization	1544-3973	2004-03	http://dl.acm.org/citation.cfm?id=1924	Computers - Computer Architecture
IEEE SWEBOOK	14	ACM Transactions on Asian Language Information Processing	1558-3430	2002-03	http://dl.acm.org/citation.cfm?id=1820	Linguistics - Computer Applications
IOP-J	15	ACM Transactions on Asian and Low-Resource Language Information Processing	2375-4702	2002-03	http://dl.acm.org/citation.cfm?id=11521	Linguistics - Computer Applications
JSTOR	16	ACM Transactions on Autonomous and Adaptive Systems	1556-4703	2006-09	http://dl.acm.org/citation.cfm?id=10101	Computers - Computer Systems
Nature	17	ACM Transactions on Computation Theory	1942-3462	2009-02	http://dl.acm.org/citation.cfm?id=11190	Mathematics - Computer Applications
OUP	18	ACM Transactions on Computational Logic	1557-945X	2000-07	http://dl.acm.org/citation.cfm?id=1773	Computers
Project Muse	19	ACM Transactions on Computer Systems	1557-7333	1983-02	http://dl.acm.org/citation.cfm?id=1774	Computers - Computer Systems
RSC Glod	20	ACM Transactions on Computer-Human Interaction	1557-7325	1994-03	http://dl.acm.org/citation.cfm?id=1756	Computers - Computer Engineering
SAGE	21	ACM Transactions on Computing Education	1946-6226	2001-03	http://dl.acm.org/citation.cfm?id=11193	Computers, Education
Science Direct	22	ACM Transactions on Database Systems	1557-4644	1976-03	http://dl.acm.org/citation.cfm?id=1777	Computers - Data Base Management
SIAM						
Springer Link						
T&F						
Wiley						



Full text list can be accessed at:

- <http://libdocs.nitrkl.ac.in/journals/2017/>
- <http://library.nitrkl.ac.in/index.php/resources/electronic-resources/list-of-full-text-e-resources/list-of-full-text-e-journals>

Research/Project Support Service (RPS)

RPS objectives are:

- to provide value added services to NITR community and to attend the Reference queries
- to support research/project related activities.
- to extend help its users in using Turnitin, Scopus, Grammarly, Searching e-resources, Citation styles, User education and other related tools.
- URL:
<http://library.nitrkl.ac.in/index.php/initiatives/research-support>

Research Support/Reference Service		
In order to provide value added services to NITR community during both weekdays and weekends, BPCL is accommodated its library staff at 2 nd floor to attend the Reference queries and also to support research/project related activities. The designated library staff will help you in attending your queries on Turnitin , Scopus , Grammarly , Searching e-resources , Mendeley , User education and other related tools.		
Research Support Tutorials		
Tool name	Documents	Video/PDF Files
User Orientation	User Education Program - Powerpoint Presentation	Under Construction
	<ul style="list-style-type: none"> • Creating a Turnitin Account • Joining a Turnitin Account • Creating a Class in Turnitin • Adding Students to Turnitin • Creating a Turnitin Assignment • Submitting a Paper in Turnitin • Accessing the Assignment Inbox • Viewing an Originality Check Report • Using Grade Mark Online Grading • Creating a Peer Mark Assignment • How to use the Turnitin iPad app • How to Interpret Turnitin Reports • Using the Quick Mark Manager 	<ul style="list-style-type: none"> • PDF Tutorial
	<ul style="list-style-type: none"> • http://help.scopus.com/Content/tutorials/sc_menu.html 	<ul style="list-style-type: none"> • PDF Tutorial • Find Answers
	<ul style="list-style-type: none"> • https://www.grammarly.com/ 	
	<ul style="list-style-type: none"> • https://www.mendeley.com/ 	
	<ul style="list-style-type: none"> • Full Text Databases • Abstract Databases • E-Books (Springer & Elsevier) • NPTEL Videos 	
	<ul style="list-style-type: none"> • https://orcid.org/register 	
Style Guides	Useful Links....	
	<ul style="list-style-type: none"> • http://www.bncp.edu/bncplibrary/styleguides.html 	

Initiatives taken by BPCL

Portals, Database, Applications, etc.


A series of horizontal lines in red and white, stacked and offset, creating a decorative border at the bottom of the slide.

Services & Initiatives by BPCL

- Library Website
- Library Automation – Transition from LibSys to Koha (ILMS)
- Liaison Program with Departments (LPD)
- Research /Project Support Services (RPS) - Turnitin, Grammarly, Scopus, WOS, Ref Mgt., etc.
- Subject / Research Guide
- BPCL updates over Social Media
- Mobile Applications, QR Code, etc.
- Institutional Repositories – Open Access
- Library Survey

IR Name	Platform	Contents	Items
e-Papers@NITR	DSpace	Scholarly Publications by all NITR fraternity – Journal Articles, Conference Papers, Books, Book Chapters, etc.	2852+
E-Thesis@NITR	e-Prints	Theses and Dissertations	6542+
Project OAOB	e-Prints	Open Access Odia Books (OAOB) preserves the heritage of Odia literature and culture by digitizing old and rare literary in Odia language.	779+
NITR Documents	DSpace	an open access repository system for all official key documents of NITR such as Minutes of BOG, Senate, HOD, MoUs, Accreditation & Ranking, etc.	300+

Subject/Research Guides

**Biju Patnaik Central Library**
National Institute of Technology Rourkela

Subject / Research Guide

[Subject / Research Guide](#) | [All Resources](#) | [Library Representative \(Liaison\)](#) | [Feedback & Suggestion](#) | [BPCL](#)

Welcome to Subject / Research Guide

The objective of this Subject/Research guide is to provide information about the key resources accessible to all NITR community in a particular subject. This is not a comprehensive guide, but rather a selective list of resources that are most useful in locating the required information on a particular subject. This guide enables you to access resources such as Books, e-Books, Magazines, e-journals, subscribed databases, Open Access Educational Resources (OERs), Technology Enabled Learning resources (Videos, Lessons, etc.) and library catalog on a single platform.

BPCL team welcomes all your suggestions, feedback and active participation to improve this library guide (LibGuide) using [Feedback & Suggestion](#) or mail to HOD, BPCL at library@nitrrkl.ac.in.

List of Guides

Please select guide using radio boxes to limit your choice !

☒ Subject / Department Guides ☒ Topic Guides ☒ Course Guides

Biotechnology & Medical Engineering	Subject / Department
Ceramic Engineering	Subject / Department
Chemical Engineering	Subject / Department
Chemistry	Subject / Department
Civil Engineering	Subject / Department
Computer Science & Engineering	Subject / Department
Earth & Atmospheric Science	Subject / Department
Electrical Engineering	Subject / Department
Electronics & Communication Engineering	Subject / Department

Contact @ Library

**Dr. Bhojaraju Gunjal**
Head & Deputy Librarian
Biju Patnaik Central Library
NIT Rourkela - 769008 |
Sundargarh | Odisha | India
Phone: +91-661-2462101 |
E-Mail: gunjalb@nitrrkl.ac.in
Library Matters: library@nitrrkl.ac.in
Web: <http://library.nitrrkl.ac.in>

Technology Enabled Learning Resources


- [ANKCTEL Video Lecturers](#)
- [Moodle@NIT Rourkela](#)
- [NPTEL \(MHRD, GOI\)](#)

Newly Added Guides

- [MA 101 - Mathematics-I](#)
- [Research Support Tools](#)
- [Institutional Repositories](#)
- [Detect and Avoid Plagiarism](#)
- [Referencing and Citation](#)

Newly Added E-Resources

- [J-STAGE](#)
- [Economic Survey - MoF, GOI](#)

**Biju Patnaik Central Library**
National Institute of Technology Rourkela

Electronics & Communication Engineering

[Subject / Research Guide](#) | [All Resources](#) | [Library Representative \(Liaison\)](#) | [Feedback & Comment](#) | [BPCL](#)

Introduction Books / E-Books Magazines / E-Journals Databases Patents / Standards Open Access Resources E-Resources Usage Policy

About Electronics and Communication Engineering

Electronics Engineers Design, develop and test electronic systems, devices, and equipment. Examples of these systems include computer components, GPS systems, communication systems, antennas, satellite transponders, electronics guidance system for aircraft, electronic control for missiles, signal processing based biomedical instruments, entertainment electronics and home applications, VLSI and ULSI chips and many more. Several specializations within Electronics Engineering that include Automatic Controls, Digital Systems (Computer Systems), Electromagnetics, Electronics, Semiconductor Devices, Communication and Signal Processing.


Click on link to read more : [Electronics and Communication Engineering](#)

Using this Guide

This guide is designed to help you to locate and access below key resources available in this subject area on a single platform:

- Books and E-Books
- Magazines and E-Journals
- Subscribed Databases
- Open Access Resources
- Technology Enabled Learning Resources
- Videos, Lessons
- Library Catalog (OPAC / WEBOPAC)
- E-resources Usage Policy

Library Representative (LR)

**Mr. D. P. Tripathi**
Assistant Librarian
Ph: 0661-2462110
tripathidp@nitrrkl.ac.in

Faculty Liaison Representative (FLR)

Prof. Lakshi Prosad Roy
Department of ECE
Ph: 0661-2462470
Mail: royl@nitrrkl.ac.in

Latest News on Electronics

- [Controlling the properties of matter in two-dimensional crystals](#)
- [Next-generation smartphone battery inspired by the gut](#)
- [A complete waste of energy](#)
- [Can the brain feel it? The world's smallest](#)

Subject / Research Guide



- to provide information about the key resources accessible to all NITR community in a particular subject.
- to access resources such as Books, e-Books, Magazines, e-journals, subscribed databases, Open Access Educational Resources (OERs), Technology Enabled Learning resources (Videos, Lessons, etc.) and library catalogue on a single platform. URL:
- Research Support and other tools information at one place
- <http://library.nitrrkl.ac.in/libguide/subjects/index.php>

Future plan for BPCL

Areas	Future Plan
New Building	<ul style="list-style-type: none">• Shifting of Central Library to New Building
Infrastructure	<ul style="list-style-type: none">• Increase Reading space• Increase no. of Computers & Printers• Digital Signage for easy dissemination of Information
Acquisition	<ul style="list-style-type: none">• Online Requisition of Books
Periodicals	<ul style="list-style-type: none">• Online resources portal enhancement with ERM CORAL
Services	<ul style="list-style-type: none">• To establish single search interface for easy retrieval of the documents

Connect with BPCL

Stay connected with BPCL for latest updates on Social Media

Social Media	URL
 Facebook:	https://www.facebook.com/bpcl.nitrkl
 Twitter:	https://twitter.com/BPCL_NITR
 Google Plus:	https://plus.google.com/u/0/+CentralLibraryNITR/
 Blog:	http://library-nitrkl.blogspot.in/
 ORCID:	http://orcid.org/0000-0003-0059-6847

Library Staff List

Name and Designation	Responsibility	Contact details
Dr. Bhojaraju Gunjal Head & Deputy Librarian, Central Library	<ul style="list-style-type: none"> Library Administration & Management, Overall supervision & mentoring of library staff Planning & Implementation of New Initiatives Organizing Seminars/Workshops/Conferences Outreach Programs - User Education 	library@nitrkl.ac.in ; gunjalb@nitrkl.ac.in Phone: +91-661-2462101
Mr. Vinod Kumar Mishra Assistant Librarian - Acquisition SIC Mr. Sanat Behera, TA	<ul style="list-style-type: none"> Acquisition/Technical Process Section-in-Charge Collection development via Book Fair Book Bank Technical Processing NITR Publications Library Automation 	bpcl-acq@nitrkl.ac.in ; mishrav@nitrkl.ac.in Phone: +91-661-2462107
Mrs. Puspita Mishra Assistant Librarian - Circulation SIC Mr. Kshirod Das, STA	<ul style="list-style-type: none"> Management of Circulation Section Stock Management of Book / Binding Book Bank & Text Book Library Rectification of book details Imprest money of BPCL 	bpcl-cir@nitrkl.ac.in ; mishrapuspita@nitrkl.ac.in Phone: +91-661-2462103
Mr. Dibya Kishor Pradhan Assistant Librarian - Digital, Research Support Mr. Srikant Sahu, TA	<ul style="list-style-type: none"> Management of all IRs (DSpace, e-Thesis, NITR Documents) Digital Processing (Open Access Odia Books) / DMS Research Support & Reference User Education Program LibGuide/Research Guide / Library Survey 	bpcl-dig@nitrkl.ac.in ; pradhandk@nitrkl.ac.in Phone: +91-661-2462102
Mr. D.P. Tripathi Assistant Librarian - Periodicals SIC	<ul style="list-style-type: none"> Management of Periodicals & its Stock management IR platforms, Library Website, A/V materials management In-House Training / User Awareness Workshops ERMS implementation 	bpcl-jrl@nitrkl.ac.in ; tripathidp@nitrkl.ac.in Phone: +91-661-2462110

For more details visit: <http://library.nitrkl.ac.in>

For any help contact:
Circulation Desk - 2104

Thank You